

Recycling Municipal Solid Waste

Turning municipal solid waste to sustainable concrete wood & lumber substitutes (Pallets, Concrete Formwork, Panels, etc.)



April 2021

Zero Waste Technology

- Our company developed a unique process & production line which transforms municipal solid waste, as is, without sorting, into sterilized & homogeneous concrete, wood & lumber substitute products.
- Our company's process and R&D line has proven to be successful, and we are in scaling production mode.
- Use of unsorted domestic waste by that helping preserve the environment, and manufacturing products from the processed raw material.

“

MSW: *Municipal Solid Waste (“household waste”) is a waste stream that consists of everyday consumable items that are discarded. This general residual waste is normally put into a black bag or bin and contains a mixture of wet and dry recyclables, organic, inorganic and biodegradable materials. This includes food waste, containers, cans, cartons, product packaging and newspapers.*

”

The Process

Receive waste

1



Waste crushing & shredding

3



Molding raw material

5



2

Initial sorting
(only large/metal objects)



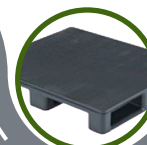
4

Waste extrusion



6

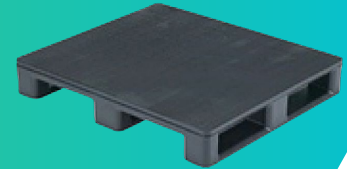
Creating products



Possible Applications

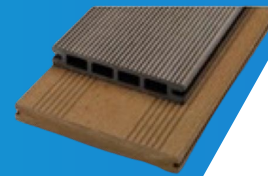
QUALIPALLETS

Durable (long lasting), greater load bearing, pests resistant, cost-effective.



QUALIWOOD

Formwork systems for concrete casting molds in civil engineering works.



QUALIFLAKES

Basic raw material for third party production, cost-effective plastic related material.

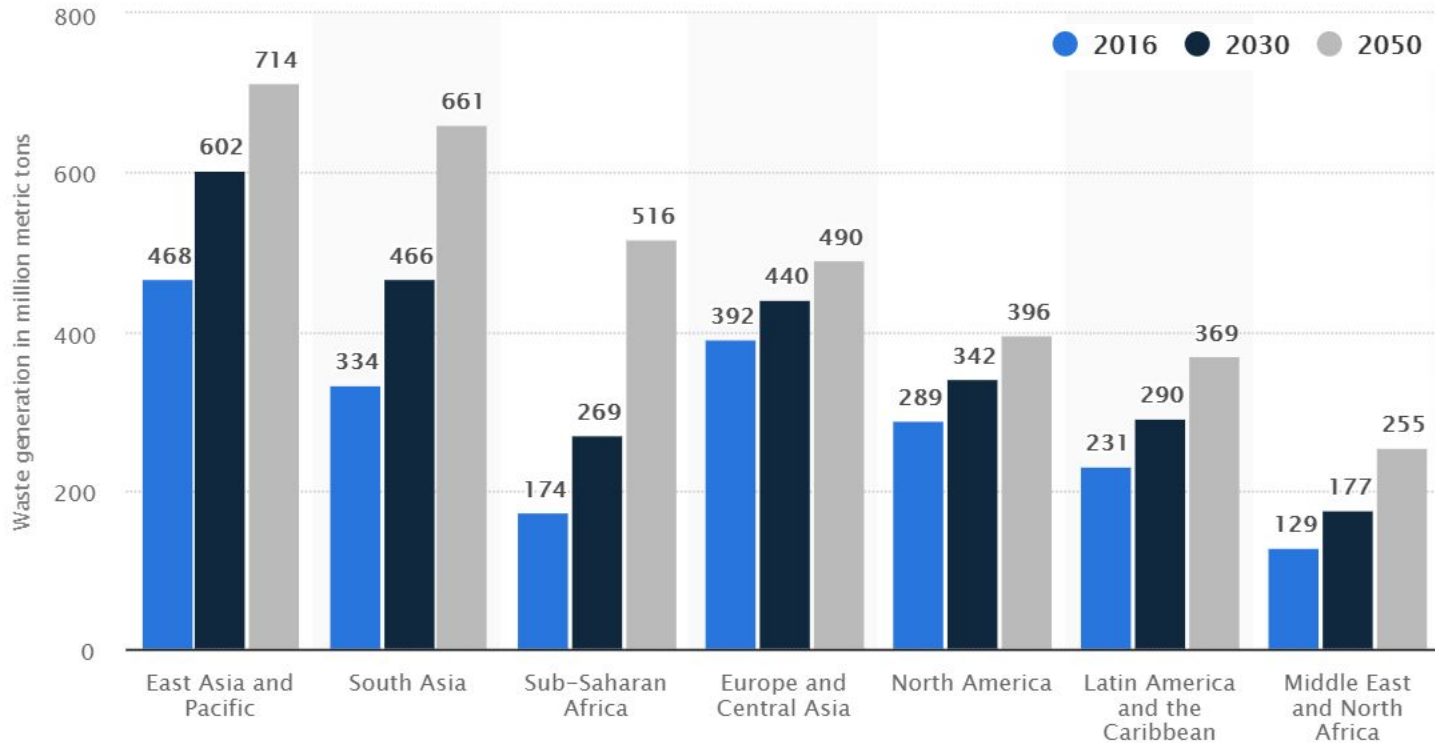


Process & Product Advantages

- Raw material cost is **ZERO** or **paid to us** by municipalities
- Products' range options are **endless**
- **Exploiting 100%** of MSW
- 100% of output raw material is **recyclable**, unlimited times
- **No added supplements** required
- **No sorting** required
- **Can be applied on all MSW**



World Waste Generation Projection



Thank You

<https://zero-waste-solutions.com>

sales@zero-waste-solutions.com